

2025

BEST SELLERS CATALOG



Showdown[®]
DISPLAYS

DISPLAY SOLUTIONS
PROMOTIONS • EVENTS • TRADE SHOWS

Please note that additional shipping, handling, design and/or processing fees may apply. Request a quote from your Sign Pro representative for complete pricing and availability information.

Sign Pro
signprofargo.com

(701) 461-7309

TABLE COVERS

28 Stock Throw Colors

WHITE *	CHERRY * PMS 1795	GRAPE PMS 268	NAVY BLUE *	BROWN PMS 476
LEMON *	RED PMS 201	PURPLE PMS VIOLET	LIME GREEN PMS 375	GRAY PMS 422
YELLOW PMS 1235	BURGUNDY PMS 504	AQUAMARINE PMS 2231	EMERALD *	CHARCOAL PMS 425
MANGO PMS 1375	FLAMINGO PMS 1767	COBALT *	SHAMROCK PMS 361	BLACK *
ORANGE PMS 1505	HOT PINK PMS 219	BLUEBERRY PMS 647	HUNTER GREEN PMS 350	
PEACH PMS 162	MULBERRY PMS 683	ROYAL BLUE PMS 661	HAZELNUT PMS 7575	

PMS colors are for reference only and may vary slightly from actual color.
* indicates stock throw colors that closely align with our stock tent canopy colors.

when choosing a table throw have you considered...

- How often will you be using your table cover?
- Does your throw need to cover all four sides of the table, or would you like an open back?
- Do you want a logo printed on the front, or would you like a full-color design that covers the entire throw?



Full-Color Front Only

- Simple to complex graphics
- Vector and raster art accepted; imprinted on front only
- Available in stock fabric colors only
- Maximum artwork size requirements apply
- Large maximum imprint area for more graphic coverage
- Fold and store in included poly bag



Full-Color Full-Bleed

- Simple, complex and photographic graphics
- Vector and raster art accepted
- Art is dye sublimated on white fabric only
- Full-color artwork can be printed across the entire throw
- No artwork size requirements
- Fold and store in included poly bag



LAZERLINE TABLE THROW



These cost-effective throws are laser-cut for a crisp finished edge.

- Available in full-color front only and full-color full-bleed
- Heat-treated edges will not fray or unravel
- Available in 3-sided or 4-sided throw styles
- Polyester poplin
- Machine-washable and wrinkle-resistant
- Flame retardant certified for exhibit hall use



Full-Color Front Only

Item #	Description	1	2-5	6-11	12-24
108213	6' LazerLine 3-Sided Throw	172.30	149.90	141.30	129.20
108214	8' LazerLine 3-Sided Throw	191.20	166.30	156.80	143.40
108201	6' LazerLine 4-Sided Throw	191.20	166.30	156.80	143.40
108202	8' LazerLine 4-Sided Throw	210.10	182.80	172.30	157.60

Stock fabric colors with full-color artwork printed on front. Artwork cannot exceed maximum size requirements.

USD MSRP (C)

Description	Table Size	Front Only Graphic Size	Product Wt. (3-Sided / 4-Sided)
6'	72"W x 29"H x 29.75"D	64"W x 25"H	2 lbs. / 2.5 lbs.
8'	96"W x 29"H x 29.75"D	64"W x 25"H	2.5 lbs. / 3 lbs.

Full-Color Full-Bleed

Item #	Description	1	2-5	6-11	12-24
108216	6' LazerLine 3-Sided Throw	172.30	149.90	141.30	129.20
108217	8' LazerLine 3-Sided Throw	191.20	166.30	156.80	143.40
108204	6' LazerLine 4-Sided Throw	191.20	166.30	156.80	143.40
108205	8' LazerLine 4-Sided Throw	210.10	182.80	172.30	157.60

White fabric fully dye sublimated with full-color artwork.

USD MSRP (C)

Description	Table Size	Full-Bleed Graphic Size	Product Wt. (3-Sided / 4-Sided)
6'	72"W x 29"H x 29.75"D	view online template	2 lbs. / 2.5 lbs.
8'	96"W x 29"H x 29.75"D	view online template	2.5 lbs. / 3 lbs.

Production Lead Time: 2 days from final proof approval



Laser-cut edges for a clean look.

ECONOMY TABLE THROW



The open-back design of this throw gives you legroom and quick access to anything you store beneath the table.

- Offers a large maximum imprint area for more graphic coverage on full-color front only throws
- Draped corners
- Polyester poplin
- Machine-washable and wrinkle-resistant
- Flame retardant certified for exhibit hall use

Full-Color Front Only

Item #	Description	1	2-5	6-11	12-24
106002	6' Economy Throw	231.30	201.20	189.70	173.50
106014	8' Economy Throw	256.75	223.40	210.60	192.60

Stock fabric colors with full-color artwork printed on front. Artwork cannot exceed maximum size requirements. USD MSRP (C)

Description	Table Size	Front Only Graphic Size	Product Wt.
6'	72"W x 29"H x 29.75"D	64"W x 25"H	2 lbs.
8'	96"W x 29"H x 29.75"D	64"W x 25"H	2.5 lbs.

Full-Color Full-Bleed

Item #	Description	1	2-5	6-11	12-24
106010	6' Economy Throw	231.30	201.20	189.70	173.50
106022	8' Economy Throw	256.75	223.40	210.60	192.60

White fabric fully dye sublimated with full-color artwork. USD MSRP (C)

Description	Table Size	Full-Bleed Graphic Size	Product Wt.
6'	72"W x 29"H x 29.75"D	view online template	2 lbs.
8'	96"W x 29"H x 29.75"D	view online template	2.5 lbs.

Production Lead Time: 2 days from final proof approval



8' full-color front only shown in gray

6' full-color full-bleed



Covers three sides of the table with a 9" overhang in back.



Underside of material is blank.

STANDARD TABLE THROW



Our most popular table throw is elegant in its simplicity.

- Covers four sides of the table, viewable from all sides
- Offers a large maximum imprint area for more graphic coverage on full-color front only throws
- Draped corners
- Polyester poplin
- Machine-washable and wrinkle-resistant
- Flame retardant certified for exhibit hall use

Full-Color Front Only

Item #	Description	1	2-5	6-11	12-24
109002	6' Standard Throw	256.75	223.40	210.60	192.60
109014	8' Standard Throw	282.00	245.40	231.30	211.50

Stock fabric colors with full-color artwork printed on front. Artwork cannot exceed maximum size requirements. USD MSRP (C)

Description	Table Size	Front Only Graphic Size	Product Wt.
6'	72"W x 29"H x 29.75"D	64"W x 25"H	2.5 lbs.
8'	96"W x 29"H x 29.75"D	64"W x 25"H	3 lbs.

Full-Color Full-Bleed

Item #	Description	1	2-5	6-11	12-24
109010	6' Standard Throw	256.75	223.40	210.60	192.60
109022	8' Standard Throw	282.00	245.40	231.30	211.50

White fabric fully dye sublimated with full-color artwork. USD MSRP (C)

Description	Table Size	Full-Bleed Graphic Size	Product Wt.
6'	72"W x 29"H x 29.75"D	view online template	2.5 lbs.
8'	96"W x 29"H x 29.75"D	view online template	3 lbs.

Production Lead Time: 2 days from final proof approval



8' full-color full-bleed

6' full-color front only shown in royal blue



Keep your supplies and accessories out of sight.



Add-On

Table Throw Messenger Bag

Item #	1	2-5	6-11	12-24
220107	42.71	41.86	40.57	39.72

USD MSRP (C)

Hardware Lead Time: Ships same day when ordered before 2 p.m. Central

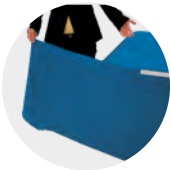
TABLE COVERS



8' full-color full-bleed transforms into a 6' fitted



Converts from 8' to 6' and Back Again!



1. Grab the back corner of the table throw.



2. Attach the corner to the back of the throw using the built-in hook-and-loop fasteners.



3. Grab the front corner of the throw and fold it tightly around the back corner of the table.



4. Secure it in place with the built-in hook-and-loop fasteners.

CONVERTIBLE TABLE THROW



This throw is easily convertible so it fits both 8' and 6' table sizes.

- Offers a large maximum imprint area for more graphic coverage on full-color front only throws
- Hook-and-loop fasteners make size conversion quick and easy; available in black or white (see website for details)
- Covers four sides of the table
- Polyester poplin
- Machine-washable and wrinkle-resistant
- Flame retardant certified for exhibit hall use

Full-Color Front Only

Item #	Description	1	2-5	6-11	12-24
104014	6'/8' Convertible Throw	324.00	281.75	265.75	243.00

Stock fabric colors with full-color artwork printed on front. Artwork cannot exceed maximum size requirements. USD MSRP (C)

Full-Color Full-Bleed

Item #	Description	1	2-5	6-11	12-24
104022	6'/8' Convertible Throw	324.00	281.75	265.75	243.00

White fabric fully dye sublimated with full-color artwork. USD MSRP (C)

Table Size	Front Only Graphic Size	Full-Bleed Graphic Size	Product Wt.
72"/96"W x 29"H x 29.75"D	64"W x 25"H	view online template	3 lbs.

Production Lead Time: 2 days from final proof approval



8' full-color full-bleed

6' full-color front only shown in gray



FITTED TABLE THROW



This throw is designed to fit snugly around tables. It's taut surfaces and sharp lines give it a tailored look that stands out at meetings, shows, career fairs and more.

- Tight, fitted look
- Covers four sides of the table
- Polyester poplin
- Machine-washable and wrinkle-resistant
- Flame retardant certified for exhibit hall use

Full-Color Front Only

Item #	Description	1	2-5	6-11	12-24
107002	6' Fitted Throw	282.00	245.40	231.30	211.50
107014	8' Fitted Throw	307.50	267.50	252.25	230.70

Stock fabric colors with full-color artwork printed on front. Artwork cannot exceed maximum size requirements. USD MSRP (C)

Description	Table Size	Front Only Graphic Size	Product Wt.
6'	72"W x 29"H x 29.75"D	64"W x 25"H	2 lbs.
8'	96"W x 29"H x 29.75"D	64"W x 25"H	2.5 lbs.

Full-Color Full-Bleed

Item #	Description	1	2-5	6-11	12-24
107010	6' Fitted Throw	282.00	245.40	231.30	211.50
107022	8' Fitted Throw	307.50	267.50	252.25	230.70

White fabric fully dye sublimated with full-color artwork. USD MSRP (C)

Description	Table Size	Full-Bleed Graphic Size	Product Wt.
6'	72"W x 29"H x 29.75"D	view online template	2 lbs.
8'	96"W x 29"H x 29.75"D	view online template	2.5 lbs.

Production Lead Time: 2 days from final proof approval



ULTRAFIT TABLE THROW



This form-fitting throw is an attractive option for promoting your brand. It stretches to fit tightly around tables, creating a crisp, refined appearance.

- Tight, form-fitting look
- Artwork is dye sublimated on two-way stretch fabric
- Machine-washable and wrinkle-resistant
- Flame retardant certified for exhibit hall use

UltraFit Table Throw

Item #	Description	1	2-5	6-11	12-24
114012	31.5" Bar-Height Full-Color Full-Bleed	392.75	357.25	341.50	322.00
114002	6' Classic Full-Color Full-Bleed	479.75	436.50	417.50	393.50
114005	8' Classic Full-Color Full-Bleed	533.00	484.75	463.50	437.00
114015	6' Curve Full-Color Full-Bleed	454.50	413.50	395.50	372.75
114018	8' Curve Full-Color Full-Bleed	504.50	459.00	439.00	413.75

White fabric fully dye sublimated with full-color artwork.

USD MSRP (C)

Description	Table Size	Full-Bleed Graphic Size	Product Wt.
31.5"	43"H x 31.5"D	view online template	1.75 lbs.
6'	72"W x 29"H x 29.75"D	view online template	2.25 - 2.5 lbs.
8'	96"W x 29"H x 29.75"D	view online template	2.75 - 3 lbs.

Production Lead Time: 4 days from final proof approval



Classic features a zippered back for an enclosed storage area.



Table leg slips into the sleeve to pull the throw taut.



back view

6' Curve

6' Classic

31.5" Bar-height

STANDARD TABLE RUNNER



This stylish runner lets you add a logo or design to any table.

- Offers a large maximum imprint area for more graphic coverage for even more ad space on full-color front only runners
- Available in two widths
- Polyester poplin
- Machine-washable and wrinkle-resistant
- Flame retardant certified for exhibit hall use
- Table throw sold separately



57" full-color front only shown in mango

28" full-color full-bleed

Full-Color Front Only

Item #	Description	1	2-5	6-11	12-24
102002	28" Standard Runner	166.50	151.50	139.80	126.50
102014	57" Standard Runner	205.80	187.30	172.90	156.40

Stock fabric colors with full-color artwork printed on front. Artwork cannot exceed maximum size requirements.

USD MSRP (C)

Full-Color Full-Bleed

Item #	Description	1	2-5	6-11	12-24
102010	28" Standard Runner	166.50	151.50	139.80	126.50
102022	57" Standard Runner	205.80	187.30	172.90	156.40

White fabric fully dye sublimated with full-color artwork.

USD MSRP (C)

Description	Finished Size	Front Only Graphic Size	Full-Bleed Graphic Size	Product Wt.
28"	28"W x 80"D	24"W x 25"H	view online template	0.5 lb.
57"	57"W x 80"D	50"W x 25"H	view online template	1 lb.

Production Lead Time: 2 days from final proof approval



RETRACTABLE BANNERS

when choosing a retractable banner
have you considered...

- Will your graphic be permanent, or will you be swapping it out frequently?
- How often will your retractor be set up and taken down?
- Do you want a single- or double-sided display?



33.5"



31.5"

IDEAL RETRACTOR



The Ideal Retractor is designed from the ground up to be a quick, simple solution for short-term promotional applications.

- Lightweight, portable base
- Three-section shock cord pole
- Artwork is printed on tear-resistant Titan™ polypropylene media

Ideal Retractor

Item #	Description	1	2-5	6-11	12-24
261150	31.5" Kit	136.30	128.10	122.60	114.50
261153	33.5" Kit	149.40	140.50	134.50	125.50

Kit Includes: Hardware, Installed Graphic and Soft Carry Case USD MSRP (C)

Description	Product Size	Finished Graphic Size	Product Wt.	Media
31.5"	32.25"W x 82.25"H x 10.25"D	31.25"W x 79.5"H	4.6 lbs.	Titan™ polypropylene media
33.5"	34.25"W x 82.25"H x 10.25"D	33.25"W x 79.5"H	5 lbs.	Titan™ polypropylene media

Production Lead Time: 1 day from final proof approval



Plastic swivel foot for stability.



Banner rail easily attaches to the top of the pole for quick setup.



Shock cord pole makes setup and teardown easy.



Lightweight aluminum base features plastic ends.



36"

33.5"

31.5"

VALUE RETRACTOR



The Value Retractor is a cost-conscious option for your portable signage needs.

- Artwork is printed on tear-resistant Titan™ polypropylene media
- Two swivel feet for stability
- Available in three widths

Value Retractor

Item #	Description	1	2-5	6-11	12-24
262240	31.5" Kit	182.50	171.60	164.30	153.30
262243	33.5" Kit	191.50	180.00	172.40	160.90
262246	36" Kit	194.10	182.50	174.70	163.10

Kit Includes: Hardware, Installed Graphic and Soft Carry Case USD MSRP (C)

Description	Product Size	Finished Graphic Size	Product Wt.	Media
31.5"	34"W x 82"H x 15"D	31.5"W x 79.5"H	7 lbs.	polypropylene media
33.5"	35.75"W x 82"H x 15"D	33.5"W x 79.5"H	7.25 lbs.	polypropylene media
36"	38.5"W x 82"H x 15"D	36"W x 79.5"H	7.6 lbs.	Polypropylene Media

Production Lead Time: 2 days from final proof approval



Shock cord pole makes setup and teardown easy.



Lightweight aluminum base with plastic ends.

ECONOMY RETRACTOR



The popular Economy Retractor is versatile and budget-friendly, making it a great option for the cost-conscious marketer.

- Lightweight aluminum base
- Banner available in Titan™ no-curl hybrid media, Titan™ no-curl opaque fabric or PVC-free silver backed media

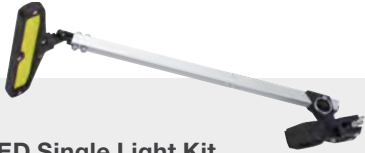
Economy Retractor

Item #	Description	1	2-5	6-11	12-24
261134	31.5" No-Curl Hybrid Media Kit	290.00	272.50	261.00	243.50
262162	31.5" No-Curl Opaque Fabric Kit	290.00	272.50	261.00	243.50
261364	31.5" PVC-Free Silver Backed Media Kit	290.00	272.50	261.00	243.50
261136	33.5" No-Curl Hybrid Media Kit	300.25	282.25	270.25	252.25
262163	33.5" No-Curl Opaque Fabric Kit	300.25	282.25	270.25	252.25
261366	33.5" PVC-Free Silver Backed Media Kit	300.25	282.25	270.25	252.25
261138	36" No-Curl Hybrid Media Kit	335.50	315.25	302.00	281.75
262164	36" No-Curl Opaque Fabric Kit	335.50	315.25	302.00	281.75
261368	36" PVC-Free Silver Backed Media Kit	335.50	315.25	302.00	281.75

Kit Includes: Silver or Black Hardware, Installed Graphic and Soft Carry Case USD MSRP (C)

Description	Product Size	Product Wt.
31.5"	32"W x 83.5"H x 15"D	7 lbs.
33.5"	34"W x 83.5"H x 15"D	7.25 lbs.
36"	36.5"W x 83.5"H x 15"D	8.5 lbs.

Production Lead Time: 2 days from final proof approval



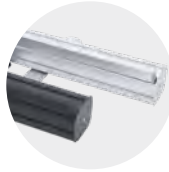
Add-On

Ultimate LED Single Light Kit

Item #	Description	1	2-5	6-11	12-24
150120	Kit	183.00	177.50	172.00	166.50

USD MSRP (C)

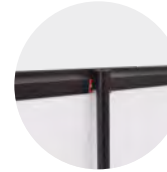
Hardware Lead Time: Ships same day when ordered before 2 p.m. Central



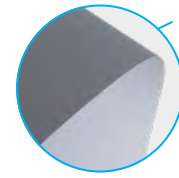
Hardware available in silver or black.



Two swivel feet for stability.



Banner rail easily attaches to the top of the pole for quick setup.



Our sustainable display option uses PVC-free media and includes the recyclable aluminum base.



31.5" with single light kit (sold separately)

ECONOMY PLUS RETRACTOR



This display elevates our popular Economy Retractor with improved durability and additional features.

- Available in two widths
- Single-footed design keeps the retractor stable while maintaining a low profile
- Flip-lever telescoping pole makes setup and adjustment simple
- Banner available in Titan™ no-curl hybrid media or dry-erase media

Economy Plus Retractor

Item #	Description	1	2-5	6-11	12-24
261012	31.5" No-Curl Hybrid Media Kit	329.00	309.25	296.00	276.25
262191	31.5" Dry-Erase Media Kit	329.00	309.25	296.00	276.25
261002	33.5" No-Curl Hybrid Media Kit	346.25	325.50	311.75	291.00
262192	33.5" Dry-Erase Media Kit	346.25	325.50	311.75	291.00

Kit Includes: Hardware, Installed Graphic and Soft Carry Case USD MSRP (C)

Description	Product Size	Finished Graphic Size	Product Wt.
31.5"	32"W x 64"-82.5"H x 15"D	31.5"W x 60"-78.5"H	7 lbs.
33.5"	34"W x 64"-82.5"H x 15"D	33.5"W x 60"-78.5"H	7.5 lbs.

Production Lead Time: 2 days from final proof approval



Dry-erase media lets you write out your message and wipe it away (markers not included).



Hook-and-loop fasteners make banners easy to swap out.



31.5"

33.5"

RETRACTABLE BANNERS

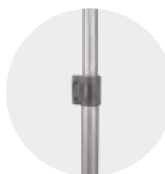


46.5" double

33.5" single



Dry-erase media lets you write out your message and wipe it away (markers not included).



Flip-lever telescoping pole makes setup and adjustment simple.



Hook-and-loop fasteners make banners easy to swap out.



Streamlined base is available in single- and double-banner options.

DELUXE PRO RETRACTOR



The Deluxe Pro Retractor features a curved base with durable aluminum end caps. Swapping out graphics is a breeze with the hook-and-loop banner system.

- Banner available in Titan™ no-curl opaque fabric or dry-erase media
- Banner is printed single-sided; double-sided option includes two banners

Deluxe Pro Retractor

Item #	Description	1	2-5	6-11	12-24
262250	33.5" Single No-Curl Opaque Fabric Kit	358.25	336.75	322.50	301.00
262251	33.5" Double No-Curl Opaque Fabric Kit	541.00	527.50	485.00	471.50
262202	33.5" Single Dry-Erase Media Kit	358.25	336.75	322.50	301.00
262203	33.5" Double Dry-Erase Media Kit	541.00	527.50	485.00	471.50
262254	46.5" Single No-Curl Opaque Fabric Kit	480.25	451.50	432.25	403.50
262255	46.5" Double No-Curl Opaque Fabric Kit	708.50	689.50	635.50	616.00
262204	46.5" Single Dry-Erase Media Kit	480.25	451.50	432.25	403.50
262205	46.5" Double Dry-Erase Media Kit	708.50	689.50	635.50	616.00

Kit Includes: Hardware, Installed Graphic(s) and Soft Carry Case

USD MSRP (C)

Description	Product Size (Single / Double)	Finished Graphic Size	Product Wt. (Single / Double)
33.5"	34.75"W x 65.25"-83.25"H x 8.5"D / 9.25"D	33.5"W x 61.5"-79.5"H	12.25 lbs. / 16 lbs.
46.5"	48.5"W x 65.25"-83.25"H x 8.5"D / 9.25"D	46.5"W x 61.5"-79.5"H	16.75 lbs. / 22.5 lbs.

Production Lead Time: 1 day for no-curl opaque fabric / 2 days for dry-erase media from final proof approval

STRATUS RETRACTOR



The Stratus Retractor's streamlined base features a low center of gravity to keep it stable, eliminating the need for fold-out feet.

- Durable, lightweight construction
- Banner available in Titan™ no-curl hybrid media, Titan™ no-curl opaque fabric or PVC-free silver backed media

Stratus Retractor

Item #	Description	1	2-5	6-11	12-24
262072	31.5" No-Curl Hybrid Media Kit	351.50	330.50	316.50	295.25
262151	31.5" No-Curl Opaque Fabric Kit	351.50	330.50	316.50	295.25
261461	31.5" PVC-Free Silver Backed Media	351.50	330.50	316.50	295.25
262074	33.5" No-Curl Hybrid Media Kit	365.00	343.00	328.50	306.50
262152	33.5" No-Curl Opaque Fabric Kit	365.00	343.00	328.50	306.50
261462	33.5" PVC-Free Silver Backed Media	365.00	343.00	328.50	306.50
262076	36" No-Curl Hybrid Media Kit	388.25	365.00	349.50	326.25
262153	36" No-Curl Opaque Fabric Kit	388.25	365.00	349.50	326.25
261463	36" PVC-Free Silver Backed Media	388.25	365.00	349.50	326.25

Kit Includes: Hardware, Installed Graphic and Soft Carry Case

USD MSRP (C)

Description	Product Size	Product Wt.
31.5"	33"W x 67.5"-81.625"H x 7.125"D	11.25 lbs.
33.5"	34.25"W x 67.5"-81.625"H x 7.125"D	12 lbs.
36"	37.25"W x 67.5"-81.625"H x 7.125"D	12.5 lbs.

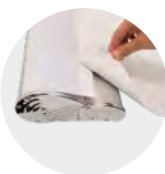
Production Lead Time: 2 days from final proof approval



36"

33.5"

31.5"



Hook-and-loop fasteners make banners easy to swap out.



Aluminum base features chrome end caps and has a low center of gravity.



Shock cord pole with telescoping flip-lever extension makes setup and adjustment simple.

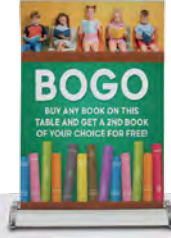
MINI TABLETOP DISPLAYS

These displays fit into small areas, making them perfect for tables and countertops.

- Lightweight and portable
- Warranties range between six months and one year (see website for details)
- Kit contents vary (see website for details)



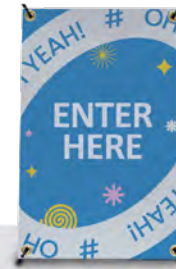
Deluxe Mini



Large Mini Promo



Economy



Mini X



EuroFit Mini

Mini Tabletop Displays

Item #	Description	1	2-5	6-11	12-24
262014	Deluxe Mini Kit	76.30	73.25	70.95	67.15
210242	Large Mini Promo Kit	66.05	63.40	61.45	58.10
261130	24" Tabletop Economy No-Curl Hybrid Media Kit	180.00	169.20	162.00	151.20
262160	24" Tabletop Economy No-Curl Opaque Fabric Kit	180.00	169.20	162.00	151.20
280370	EuroFit Mini Kit	98.25	94.30	91.35	86.45
210032	Mini X Banner Display Kit	38.00	36.48	35.34	33.44

USD MSRP (C)

Production Lead Time: 2-4 days from final proof approval

MICRO GEOMETRIX DISPLAY



Create a variety of multidimensional displays in seconds with the Micro GeoMetrix display.

- Lightweight aluminum frame with plastic hubs
- Artwork is dye sublimated on polyester double knit

Micro GeoMetrix Classic Kit

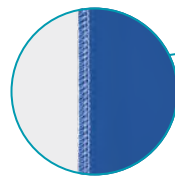
Item #	Description	1	2-5	6-11	12-24
337207	Kit	521.00	500.50	484.75	458.50

Kit Includes: Nine-Quad Square Frame, 5 Graphic Panels and Soft Carry Case

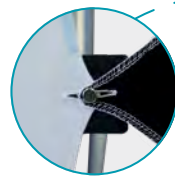
USD MSRP (C)

Product Size: 46"W x 46.75"H x 9.62"D
 Product Wt.: 9.25 lbs.
 Media: polyester double knit

Production Lead Time: 4 days from final proof approval



Graphic panels are finished with white stitching.



Micro GeoMetrix pegs hold up to three panels each.



Buttonholes are reinforced with white stitching to prevent tearing.



Add-On

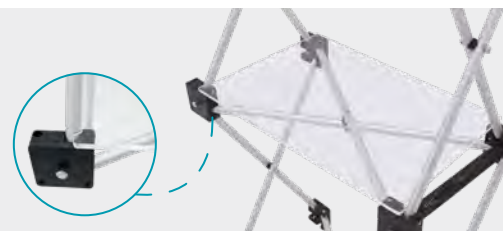
Micro GeoMetrix Shelf

Item #	Description	1	2-5	6-11	12-24
338069	Internal Clear Shelf	45.88	44.04	42.67	40.37

Each shelf supports up to 5 lbs.
 Compatible with frames equipped with locking arms only.

USD MSRP (C)

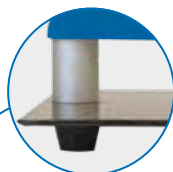
Hardware Lead Time: Ships same day when ordered before 2 p.m. Central



BANNER DISPLAYS



Sustainable recycled polyester knit is made with fibers recycled from plastic bottles.



Plastic feet elevate the base and keep the display stable.

recycled polyester knit

EUROFIT BANNER DISPLAY



A fabric graphic cover slides over a tubed frame, letting you create amazing backdrops or portable privacy walls.

- Multiple sizes can be arranged together for endless display possibilities
- Artwork is dye sublimated on recycled polyester knit
- Double-sided graphic cover is viewable from both the front and back of the display
- Steel base with a black, powder-coated finish
- Not compatible with the EuroFit Connector or EuroFit Cascade Merchandiser kits

EuroFit Banner Display (Recycled Polyester Knit)

Item #	Description	1	2-5	6-11	12-24
255110	2' Kit	285.75	277.25	268.75	260.00
255113	3' Kit	393.00	381.00	369.25	357.50

Kit Includes: Hardware, Graphic Cover and Soft Carry Case USD MSRP (C)

Description	Product Size	Product Wt.
2'	25.75"W x 91"H x 10"D	15.5 lbs.
3'	37.75"W x 91"H x 10"D	20.5 lbs.

Production Lead Time: 4 days from final proof approval

Add-Ons

EuroFit Light Clamp

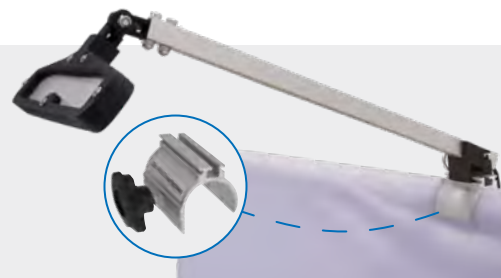
Item #	Description	1	2-5	6-11	12-24
255125	Light Clamp	6.87	6.66	6.46	6.25

USD MSRP (C)

Ultimate LED Single Light Kit

Item #	Description	1	2-5	6-11	12-24
150120	Kit	183.00	177.50	172.00	166.50

USD MSRP (C)



Hardware Lead Time: Ships same day when ordered before 2 p.m. Central



FRAMEWORX BANNER DISPLAY



These lightweight displays feature a contemporary design that brings new life to your exhibit.

- Banners attach using low-profile clear grommets
- Face cutout hole location is standard and cannot be customized

FrameWorx Banner Display

Item #	Description	1	2-5	6-11	12-24
263061	3' Single-Sided Kit	181.00	173.70	168.30	159.20
263062	3' Double-Sided Kit	216.60	207.90	201.40	190.60
263328	8.5' Kit	476.50	457.50	443.25	419.25
263331	10.5' Kit	521.00	500.00	484.50	458.50

3' Kit Includes: Silver or Black Hardware, Graphic and Soft Carry Case USD MSRP (C)
8.5' & 10.5' Kit Includes: Black Hardware, Graphic and Soft Carry Case

Description	Product Size	Product Wt.	Media
3'	36.75"W x 74"H x 15.5"D	5.6 lbs.	13 oz. smooth scrim vinyl
8.5'	101.75"W x 90.5"H x 15.5"D	15 lbs.	600 denier polyester
10.5'	123.25"W x 90.25"H x 15.5"D	17 lbs.	600 denier polyester

3.5' FrameWorx Face Cutout

Item #	Description	1	2-5	6-11	12-24
263054	Single Face Cutout Kit	202.30	194.20	188.10	178.00

Kit Includes: Silver or Black Hardware, Graphic and Soft Carry Case USD MSRP (C)

Product Size	Product Wt.	Media
41"W x 81.75"H x 15.5"D	6.2 lbs.	13 oz. smooth scrim vinyl

Production Lead Time: 2 days for 13 oz. smooth scrim vinyl / 4 days for 600 denier polyester from final proof approval

X BANNER DISPLAYS

The clean X design of these displays makes them simple, durable and easy to assemble.

- Artwork is printed on Titan™ 13 oz. smooth scrim vinyl
- The X shape of the frame is designed to keep the banner taut
- Corner grommets attach to plastic hooks on display arms
- Banners are finished with brass grommets by default; can be customized with nickel or clear plastic grommets by request
- Warranty details available online

Euro-X Banner Display

Item #	Description	1	2-5	6-11	12-24
263120	31.5" x 70" Kit	254.25	244.10	236.50	223.80
Kit Includes: Hardware, Graphic and Drawstring Case				USD MSRP (C)	

Product Size	Finished Graphic Size	Product Wt.
31.5"W x 70"H x 20.5"D	31.5"W x 70"H	3.25 lbs.

Tri-X Banner Display

Item #	Description	1	2-5	6-11	12-24
263103	31.5" x 70" Kit	161.50	155.00	150.20	142.10
263112	31.5" x 79" Kit	185.50	178.10	172.60	163.30
263100	33.5" x 80" Kit	189.40	181.80	176.10	166.70
Kit Includes: Hardware, Graphic and Drawstring Case				USD MSRP (C)	

Description	Product Size	Finished Graphic Size	Product Wt.
31.5" x 70"	31.5"W x 70"H x 31.5"D	31.5"W x 70"H	2.25 lbs.
31.5" x 79"	31.5"W x 79"H x 32.5"D	31.5"W x 79"H	3 lbs.
33.5" x 80"	33.5"W x 80"H x 32.5"D	33.5"W x 79"H	3.25 lbs.

Production Lead Time: 2 days from final proof approval



HEADLINER BANNER DISPLAY



This enormous banner display is great for use in parking lots or at outdoor events.

- Banner available in backlit woven polyester or Titan™ 18 oz. opaque scrim vinyl
- Vinyl banners can be printed single- or double-sided; polyester banner available single-sided only
- Includes four heavy-duty black stakes
- Adjustable frame hardware is compatible with custom banner heights and widths (call for quote; restrictions may apply)
- Banners used outdoors have a 90-day warranty; banners used indoors have a 1-year warranty

Headliner Banner Display

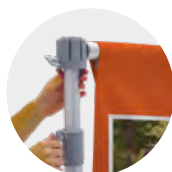
Item #	Description	1	2-5	6-11	12-24
263400	Backlit Woven Polyester Single-Sided Kit	1590.00	1526.00	1478.00	1399.00
263401	18 oz. Opaque Scrim Vinyl Single-Sided Kit	1590.00	1526.00	1478.00	1399.00
263402	18 oz. Opaque Scrim Vinyl Double-Sided Kit	1716.00	1647.00	1596.00	1510.00
Kit Includes: Hardware, Graphic, 4 Stakes and Soft Carry Case with Wheels				USD MSRP (C)	

Product Size	Finished Graphic Size	Product Wt. (Polyester / Vinyl)
129.75"W x 85.25"H x 39.5"D	119"W x 76.5"H	56 lbs. / 60 lbs.

Production Lead Time: 2 days for 18 oz. scrim vinyl / 4 days for backlit woven polyester from final proof approval



Heavy-duty steel foot features a handle so it's easy to position during setup.



Thumbscrews on the frame make it easy to set up and adjust.



Banner rail slides into notches in the frame's hubs.

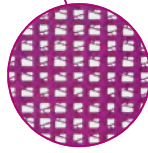


Set of two ballasts (item #263298 sold separately; see website) keep the feet weighted down.

BANNERS



3' x 6' banner with grommets



4' x 8' banner with grommets



2' x 4' banner with pole pockets



when choosing a banner have you considered...

- Will you be using your banner indoors or outdoors?
- How long will your banner be displayed?
- Do you need a single- or double-sided banner?

9 OZ. MESH VINYL BANNER



This single-sided banner is made of breathable 60/40 mesh vinyl that excels on breezy days.
· Multiple finishing styles available

9 oz. Mesh Vinyl Banner

Item #	Description	Product Wt.	1	2-4	5-14	15-33
304411	2' x 6'	1.25 lbs.	61.30	56.25	51.65	47.80
304414	3' x 6'	2 lbs.	92.00	84.45	77.50	71.75
304417	4' x 8'	3 lbs.	150.60	137.70	127.50	115.10

USD MSRP (C)

13 OZ. SCRIM VINYL BANNER



Versatile enough for both indoor and outdoor use, this single-sided banner is a top choice.
· Multiple finishing styles available

13 oz. Scrim Vinyl Banner

Item #	Description	Product Wt.	1-2	3-7	8-22	23-49
304360	2' x 4'	1 lb.	35.88	32.29	29.06	26.55
304364	3' x 6'	2.5 lbs.	80.70	72.65	65.35	59.70
304367	4' x 8'	4 lbs.	131.20	118.10	106.30	97.10

USD MSRP (C)

18 OZ. OPAQUE SCRIM VINYL BANNER



This banner is reinforced with scrim, making it extremely durable for outdoor use.
· Multiple finishing styles available

18 oz. Opaque Scrim Vinyl Banner (Single-Sided)

Item #	Description	Product Wt.	1	2-3	4-9	10-22
304384	3' x 6'	2.5 lbs.	92.00	84.45	77.50	71.75
304387	4' x 8'	4 lbs.	150.30	138.00	127.80	114.80
304388	4' x 10'	5 lbs.	187.90	172.50	159.80	143.50

USD MSRP (C)

18 oz. Opaque Scrim Vinyl Banner (Double-Sided)

Item #	Description	Product Wt.	1-2	3-7	8-22	23-49
304470	2' x 4'	1 lb.	86.60	81.40	75.70	71.10
304472	3' x 6'	2.5 lbs.	194.90	183.20	170.40	160.00
304474	4' x 8'	4 lbs.	325.25	302.50	284.25	262.75

USD MSRP (C)

Production Lead Time: 2 days from final proof approval

Popular Finishing Styles

Additional finishing styles available online.

Heat Weld

Single-sided vinyl banners only

Sewn

Fabric and vinyl banners



Hem & Grommets



Hem, Rope & Grommets



3" Pole Pockets



Hem Only



Hem & Grommets



3" Pole Pockets



when choosing a sail sign
have you considered...

- How long will your sail sign be displayed?
- Will you be using this product indoors or outdoors?

SAIL SIGNS



Sail signs are built to move in the wind, making them truly hard to miss.

- Warranty information available online
- Available single- or double-sided

Value Teardrop Sail Sign

Description	Item #	Single-Sided Flag				Double-Sided Flag				
		1	2-5	6-11	12-24	1	2-5	6-11	12-24	
6.5' Kit with Cross Base and Water Ballast	191611	195.50	189.70	179.90	174.00	191613	276.75	268.50	254.75	246.40
9.5' Kit with Cross Base and Water Ballast	191619	221.70	215.10	204.00	197.30	191621	317.00	307.50	291.50	282.00
13' Kit with Cross Base and Water Ballast	191627	275.50	267.25	253.50	245.20	191629	412.50	400.25	379.50	367.25

Kit Includes: Hardware with Specified Base and Graphic (Does not include carry case) USD MSRP (C)

Value Razor Sail Sign

Description	Item #	Single-Sided Flag				Double-Sided Flag				
		1	2-5	6-11	12-24	1	2-5	6-11	12-24	
7.5' Kit with Cross Base and Water Ballast	191651	195.50	189.70	179.90	174.00	191653	276.75	268.50	254.75	246.40
10.5' Kit with Cross Base and Water Ballast	191659	221.70	215.10	204.00	197.30	191661	317.00	307.50	291.50	282.00
15' Kit with Cross Base and Water Ballast	191667	275.50	267.25	253.50	245.20	191669	412.50	400.25	379.50	367.25

Kit Includes: Hardware with Specified Base and Graphic (Does not include carry case) USD MSRP (C)

Streamline Teardrop Sail Sign

Description	Item #	Single-Sided Flag				Double-Sided Flag				
		1	2-5	6-11	12-24	1	2-5	6-11	12-24	
6' Kit with Three-Legged Base and Water Ballast	191401	267.00	259.00	245.70	237.70	191409	368.75	357.75	339.25	328.25
8' Kit with Scissor Base and Water Ballast	191403	337.75	327.50	310.75	300.50	191411	455.25	441.75	419.00	405.25
11.5' Kit with Scissor Base and Water Ballast	191405	398.00	386.00	366.00	354.25	191413	565.50	548.50	520.00	503.00
15' Kit with Scissor Base and Water Ballast	191407	470.25	456.25	432.75	418.50	191415	682.00	661.50	627.50	607.00

Kit Includes: Hardware with Specified Base, Graphic and Soft Carry Case USD MSRP (C)

Streamline Razor Sail Sign

Description	Item #	Single-Sided Flag				Double-Sided Flag				
		1	2-5	6-11	12-24	1	2-5	6-11	12-24	
7' Kit with Three-Legged Base and Water Ballast	191429	267.00	259.00	245.70	237.70	191437	368.75	357.75	339.25	328.25
9' Kit with Scissor Base and Water Ballast	191431	337.75	327.50	310.75	300.50	191439	455.25	441.75	419.00	405.25
13' Kit with Scissor Base and Water Ballast	191433	398.00	386.00	366.00	354.25	191441	565.50	548.50	520.00	503.00
17' Kit with Scissor Base and Water Ballast	191435	470.25	456.25	432.75	418.50	191443	682.00	661.50	627.50	607.00

Kit Includes: Hardware with Specified Base, Graphic and Soft Carry Case USD MSRP (C)

Premium Teardrop Sail Sign

Description	Item #	Single-Sided Flag				Double-Sided Flag				
		1	2-5	6-11	12-24	1	2-5	6-11	12-24	
6' Kit with Three-Legged Base and Water Ballast	190979	299.25	290.25	275.25	266.25	190978	434.25	421.25	399.50	386.50
8' Kit with Scissor Base and Water Ballast	190763	369.75	358.75	340.25	329.25	190762	519.50	504.00	478.00	462.50
11.5' Kit with Scissor Base and Water Ballast	190765	432.00	419.00	397.25	384.50	190764	633.50	614.50	582.50	563.50
15' Kit with Scissor Base and Water Ballast	190767	500.50	485.75	460.50	445.50	190766	746.00	723.50	686.50	664.00

Kit Includes: Hardware with Specified Base, Graphic and Soft Carry Case USD MSRP (C)

Premium Razor Sail Sign

Description	Item #	Single-Sided Flag				Double-Sided Flag				
		1	2-5	6-11	12-24	1	2-5	6-11	12-24	
7' Kit with Three-Legged Base and Water Ballast	190985	299.25	290.25	275.25	266.25	190984	434.25	421.25	399.50	386.50
9' Kit with Scissor Base and Water Ballast	190757	369.75	358.75	340.25	329.25	190756	519.50	504.00	478.00	462.50
13' Kit with Scissor Base and Water Ballast	190759	432.00	419.00	397.25	384.50	190758	633.50	614.50	582.50	563.50
17' Kit with Scissor Base and Water Ballast	190761	500.50	485.75	460.50	445.50	190760	746.00	723.50	686.50	664.00

Kit Includes: Hardware with Specified Base, Graphic and Soft Carry Case USD MSRP (C)

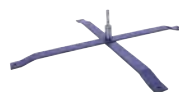
Production Lead Time: 4 days for Value and Premium / 2 days for Streamline from final proof approval



Sail Sign Accessories

Item #	Description	Product Wt.	1	2-5	6-11	12-24
190706	Ground Spike	2 lbs.	54.25	52.60	49.91	48.28
190711	Heavy-Duty Cross Base	9 lbs.	95.65	92.80	88.00	85.15
190708	Round Water Ballast	0.5 lb.	54.75	53.10	50.35	48.73
190707	Scissor Base	7 lbs.	82.70	80.20	76.10	73.60
191591	Value Cross Base*	2.8 lbs.	35.79	34.72	32.93	31.85
220351	Value Sail Sign Soft Carry Case	0.8 lb.	21.61	21.18	20.53	20.10

*Covered by a 90-day product warranty USD MSRP (C)



Item #190711
Heavy-duty cross base
(indoor/outdoor)



Item #190707
Scissor base
(indoor/outdoor)

Item #190706
Ground spike (outdoor)



Item #220351
Value sail sign soft carry case



Item #191591
Value cross base
(indoor/outdoor)*



Item #190708
Round water ballast for
6'-13' sail signs (indoor/outdoor)

Hardware Lead Time: Ships same day when ordered before 2 p.m. Central

Prices are subject to change; visit our website for the most current pricing.



NYLON FLAG



Lightweight and fade-resistant, our nylon flags come in a variety of shapes and sizes and are perfect for indoor and outdoor use.

- Constructed of 200 denier nylon
- Standard finishing includes canvas header and brass grommets
- Four rows of lock-stitching provide extra reinforcement on the fly end of rectangular flags
- Single- and double-sided options available
- Custom sizes and finishing available (visit website or call for quote; restrictions may apply)
- Flags used outdoors have a 90-day warranty; flags used indoors have a 1-year warranty

Rectangle Nylon Flag

Item #	Description	Product Wt.	1	2-5	6-11	12-24
304535	3' x 5' Single-Sided Flag	0.5 lb.	101.70	81.35	76.30	66.10
304555	3' x 5' Double-Sided Flag	1.5 lbs.	203.30	162.60	152.50	132.20
304536	4' x 6' Single-Sided Flag	0.7 lb.	139.80	111.80	104.80	90.85
304556	4' x 6' Double-Sided Flag	2.1 lbs.	279.75	223.80	209.80	181.90
304537	5' x 8' Single-Sided Flag	1 lb.	203.30	162.60	152.50	132.20
304557	5' x 8' Double-Sided Flag	3 lbs.	406.75	325.50	305.00	264.50

USD MSRP (C)

Production Lead Time: 4 days from final proof approval



Single-Sided

Single-sided flags are printed on one side; reverse image shows through the back.



Double-Sided

Double-sided flags have the image printed correctly on both sides with a block-out polyester liner.



FABRIC FLAG



Easy to hang, this flag works with any standard flagpole.

- Best for outdoor use
- Single- and double-sided options available
- Artwork is dye sublimated on super poly knit fabric for single-sided flags and on block-out polyester for double-sided flags
- Custom sizes and finishing available (visit website or call for quote; restrictions may apply)
- Flags used outdoors have a 90-day warranty; flags used indoors have a 1-year warranty



Double-sided flags feature a lightweight block-out polyester for increased flyability.



Single-Sided

Single-sided flags are printed on one side; reverse image shows through the back.



Double-Sided

Double-sided flags have the image printed correctly on both sides with a block-out polyester.

Rectangle Fabric Flag

Item #	Description	Product Wt.	1	2-5	6-11	12-24
300007	3' x 5' Single-Sided Flag	0.5 lb.	101.70	81.35	76.30	66.10
300019	3' x 5' Double-Sided Flag	1 lb.	203.30	162.60	152.50	132.20
300011	4' x 6' Single-Sided Flag	1 lb.	139.80	111.80	104.80	90.85
300020	4' x 6' Double-Sided Flag	2 lbs.	279.75	223.80	209.80	181.90
300015	5' x 8' Single-Sided Flag	1.25 lbs.	203.30	162.60	152.50	132.20
300021	5' x 8' Double-Sided Flag	2.5 lbs.	406.75	325.50	305.00	264.50

USD MSRP (C)

Production Lead Time: 4 days from final proof approval

SPIN 'N WIN PRIZE WHEEL



Give your next trade show or event a creative spin.

- Powder-coated steel legs
- A plastic clicker makes a ticking sound as the wheel spins
- Central disc panel attaches magnetically and remains stationary when the wheel spins
- All graphic panels can be custom printed with your design
- Includes twelve prize panels and central disc panel

Spin 'N Win Prize Wheel

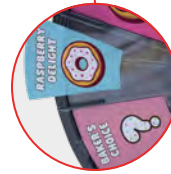
Item #	Description	1	2-5	6-11	12-24
280104	Kit	718.50	704.00	697.00	682.50
Kit Includes: Hardware, Graphic Panels and Soft Carry Case		USD MSRP (C)			

Product Size	Product Wt.	Media
31.25"W x 40.75"-72"H x 16"-31"D	16.5 lbs.	Titan™ no-curl laminated media

Production Lead Time: 2 days from final proof approval



Loud clicker attracts attention at noisy events.



Graphic panels and central disc panel can be printed using a desktop printer.



Need a Tabletop Game?

Simply remove the leg extensions to transform this prize wheel into a game suitable for tabletop use.

BAG TOSS GAME



Toss in some friendly competition at your next outdoor event with this customizable game.

- Two game boards clasp together into a single unit that can be easily transported using the convenient carry handle
- Durable plastic construction prevents rust and splinters
- Included rope acts as a distance regulator
- Hinged legs fold out to prop the game boards up at an angle
- 90-day warranty on graphic panels

Bag Toss Game

Item #	Description	1	2-5	6-11	12-24
280310	Kit	302.75	296.75	293.75	287.50
Kit Includes: Hardware, 8 Unimprinted Bean Bags and 2 Graphic Panels		USD MSRP (C)			

Product Size	Product Wt.	Media
folded: 21.5"W x 2.75"H x 33.125"D (1) open: 21.5"W x 10.5"H x 32.75"D	21.5 lbs.	Titan™ no-curl laminated media

Production Lead Time: 3 days from final proof approval



Built-in score keepers slide up and down the edges of the board.



Bean bags can be stored inside plastic molded pockets so they don't get left behind.

Add-Ons

Attach the Bag Toss Buddy to your Bag Toss (sold separately) for access to a bag holder, score keeper and drink holder.

Personalize your bags with custom printed bean bags.

See website for details.



Item #280315
Custom Printed Bean Bags



Item #280314
Bag Toss Buddy



10' tent with full-bleed dye sublimation shown with dye sublimated double-sided full wall (wall sold separately)

when choosing a tent
have you considered...

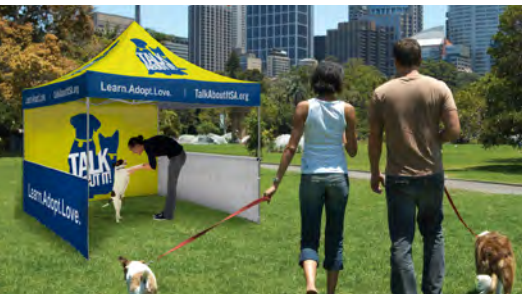
- How frequently will you be using your tent?
- What is the desired impact of your promotional message?
- Would you like to add accessories for additional branding options?

10' STANDARD TENT



This popular tent strikes a perfect balance between cost effectiveness and portability.

- 1.125"W square legs constructed of 1 mm pebble powder-coated steel
- ABS nylon joints
- Crank-up canopy creates a taut, clean peak
- 10' canopy available in eight stock colors (see below), with full-bleed dye sublimation or with full-bleed UV printing (available online)



10' Standard Tent

Item #	Description	1	2-5	6-11	12-24
240611	Full-Color Imprint Kit (1 Location)	634.00	621.50	608.50	589.50
240612	Full-Color Imprint Kit (2 Locations)	716.00	701.50	687.50	666.00
240614	Full-Color Imprint Kit (4 Locations)	857.50	840.50	823.00	797.50
240619	Dye Sublimation Kit	1272.00	1247.00	1221.00	1183.00

Kit Includes: Tent Frame, Canopy, Stake Kit and Soft Carry Case with Wheels USD MSRP (C)

Product Size	Imprint Graphic Size	Full-Bleed Graphic Size	Product Wt.
118.5"W x 127.5"-140"H x 118.5"D	peak: 44"W x 24"H valance: 60"W x 8"H	view online template	51.5 lbs.

Production Lead Time: 4 days for full-color imprint / 7 days for dye sublimation from final proof approval



Legs feature plastic push buttons for pinch-free height adjustments.



Easy-Glide Tent Feet allow the tent frame to slide on dirt and grass, preventing the legs from catching. US Patent #D760857

Tent Features & Benefits



Sets up in minutes.



Adjust tent height with the push of a button.



Crank-up canopy creates a taut, clean peak.



Secure tent to the ground with stake kit.



Collapses easily to store in soft case with wheels.

10' Tent Stock Canopy Colors



8' & 10' DELUXE TENTS



Designed for frequent use, these tents feature a stronger, heavier steel frame.

- 1.25"W square legs constructed of 1 mm pebble powder-coated steel frame
- ABS glass-filled nylon joints
- Crank-up canopy creates a taut, clean peak
- 10' canopy available in eight stock colors (see page 16), with full-bleed dye sublimation or with full-bleed UV printing (available online)
- 8' canopy available with full-bleed dye sublimation only

8' Deluxe Tent

Item #	Description	1	2-5	6-11	12-24
240829	Dye Sublimation Kit	1309.00	1283.00	1257.00	1217.00
USD MSRP (C)					

Product Size 96"W x 117.5"-130"H x 96"D
Product Wt. 58 lbs.

10' Deluxe Tent

Item #	Description	1	2-5	6-11	12-24
240621	Full-Color Imprint Kit (1 Location)	771.00	755.50	740.00	717.00
240622	Full-Color Imprint Kit (2 Locations)	852.00	835.00	818.00	792.50
240624	Full-Color Imprint Kit (4 Locations)	940.00	921.00	902.50	874.00
240629	Dye Sublimation Kit	1355.00	1328.00	1301.00	1260.00
Kit Includes: Tent Frame, Canopy, Stake Kit and Soft Carry Case with Wheels USD MSRP (C)					

Product Size 118.5"W x 127"-139.5"H x 118.5"D
Imprint Graphic Size peak: 44"W x 24"H valance: 60"W x 8"H
Full-Bleed Graphic Size view online template
Product Wt. 63.5 lbs.

Production Lead Time: 4 days for full-color imprint / 7 days for dye sublimation from final proof approval



Legs feature levers for easy height adjustments.



Easy-Glide Tent Feet allow the tent frame to slide on dirt and grass, preventing the legs from catching. US Patent #D760857

10' & 20' PREMIUM TENTS



These Premium tents feature a strong aluminum frame with sturdy hexagon-shaped legs.

- 1.75" diameter hexagon legs constructed of 0.8 mm anodized aluminum frame
- ABS glass-filled nylon joints
- Crank-up canopy creates a taut, clean peak
- Stake kit and wheeled carry case included
- 10' canopy available in eight stock colors (see page 16), with full-bleed dye sublimation or with full-bleed UV printing (available online)
- 20' canopy available in white, cherry, cobalt, navy, black, with full-bleed dye sublimation or with full-bleed UV printing (available online)

10' Premium Tent

Item #	Description	1	2-5	6-11	12-24
240631	Full-Color Imprint Kit (1 Location)	909.00	891.00	872.50	845.50
240632	Full-Color Imprint Kit (2 Locations)	972.00	952.50	933.00	904.00
240634	Full-Color Imprint Kit (4 Locations)	1060.00	1039.00	1018.00	986.00
240639	Dye Sublimation Kit	1474.00	1445.00	1415.00	1371.00
Kit Includes: Tent Frame, Canopy, Stake Kit and Soft Carry Case with Wheels USD MSRP (C)					

10' x 20' Premium Tent

Item #	Description	1	2-5	6-11	12-24
240571	Full-Color Imprint Kit (1 Location)	1172.00	1149.00	1125.00	1090.00
240572	Full-Color Imprint Kit (2 Locations)	1254.00	1229.00	1204.00	1166.00
240574	Full-Color Imprint Kit (4 Locations)	1418.00	1390.00	1361.00	1319.00
240578	Full-Color Imprint Kit (8 Locations)	1688.00	1654.00	1620.00	1570.00
240582	Full-Color Imprint Kit (12 Locations)	1709.00	1675.00	1641.00	1589.00
240583	Dye Sublimation Kit	2279.00	2233.00	2188.00	2119.00
Kit Includes: Tent Frame, Canopy, Stake Kit and Soft Carry Case with Wheels USD MSRP (C)					

Description Product Size 10' 118"W x 126.75"-139.25"H x 118"D
 10' x 20' 234.5"W x 126.75"-139.25"H x 118.25"D
Imprint Graphic Size peak: 44"W x 24"H valance: 60"W x 8"H
Full-Bleed Graphic Size view online template view online template
Product Wt. 52 lbs. 92 lbs.

Production Lead Time: 4 days for full-color imprint / 7 days for dye sublimation from final proof approval



Legs feature levers for easy height adjustments.



Easy-Glide Tent Feet allow the tent frame to slide on dirt and grass, preventing the legs from catching. US Patent #D760857

SIGNAGE

SIGNICADE® AND SIGNICADE® DELUXE A-FRAMES



With different sizes to choose from, these A-frames fit a variety of spaces.

- Maintenance-free and weather-resistant
- Folds flat for transport or storage



Signicade A-Frame

Item #	Description	1	2-5	6-11	12-24
210133	Kit	218.70	212.10	202.20	197.30

Kit Includes: Orange, Yellow or White Hardware, 2 Single-Sided Graphics, 2 Strips of Hook and 2 Strips of Loop

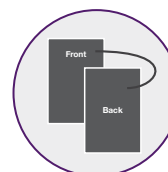
Product Size	Finished Graphic Size	Product Wt.	Media
24.5"W x 42"H x 31"D	24"W x 36"H	20 lbs.	4 mm corrugated plastic

Frame Colors Orange Yellow White

Production Lead Time: 2 days from final proof approval

when choosing signage have you considered...

- Will your sign be used indoors or outdoors?
- Will your message be permanent or will it change frequently?
- Will your sign be stationary or will you be transporting it from place to place?



Double-sided signboards have your artwork printed on both sides, making each signboard reversible.



Signicade Deluxe A-Frame

Item #	Description	1	2-5	6-11	12-24
210121	Single-Sided Kit	240.40	232.90	222.10	216.50
210122	Double-Sided Kit	257.25	249.70	237.80	232.20

Kit Includes: Black or White Hardware and 2 Single- or Double-Sided Graphics

Product Size	Finished Graphic Size	Product Wt.	Media
27"W x 38.5"H x 19"D	24"W x 36"H	21 lbs.	4 mm corrugated plastic

Frame Colors Black White

Production Lead Time: 2 days from final proof approval



Features & Benefits



Plastic base won't rust, making it great for outdoor use.



Convenient molded handle makes it easy to move.



Frames can be filled with water or sand for stability.



Signboards are easy to swap out to accommodate frequent message changes.

CORRUGATED PLASTIC SIGN



Great for use on lawns, this sign gives you a simple, inexpensive way to get your message noticed.

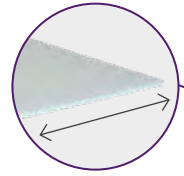
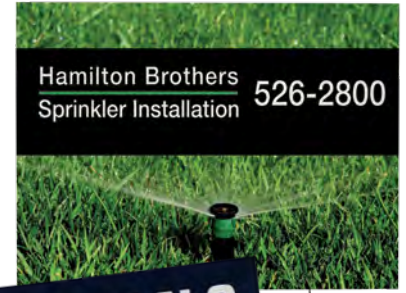
- Constructed of 4 mm corrugated plastic
- Full-color artwork can be printed on one or both sides
- Custom sizes and shapes available (call for quote; restrictions may apply)
- Corrugated plastic can be recycled after use

Corrugated Plastic Sign

Item #	Description	1	2-5	6-11	12-24
271110	36"W x 24"H Single-Sided	27.57	26.74	25.92	25.09
271111	36"W x 24"H Double-Sided	36.21	35.12	34.04	32.95
271113	24"W x 18"H Single-Sided	18.28	17.73	17.18	16.63
271114	24"W x 18"H Double-Sided	23.89	23.17	22.46	21.74

USD MSRP (C)

Production Lead Time: 2 days from final proof approval



Stakes (sold separately) slide into fluted openings along the width of the signboard.

STANDARD STEP STAKE

- Installation is quick and easy

Standard Step Stake

Item #	Description	1-10	11-20	21-30	31+
381501	Standard Step Stake	2.83	2.77	2.69	2.63

USD MSRP (C)

Hardware Lead Time: Ships same day when ordered before 2 p.m. Central

FLOOR HUGGER MAT



Put quality designs right at your feet. The Floor Hugger mat features a nylon yarn surface with black rubber borders and backing.

- Treated with Stainstopper™ and static dissipative
- Will not crack or curl
- Produced with polyester PET yarn consisting of 100% post-consumer recycled content
- Mat sizes are not exact; allow 3-5% size variance
- Art restrictions may apply (see website for details)
- Not eligible for Rush Service

Floor Hugger Mat

Item #	Description	Product Wt.	1	2-5	6-10	11-25
259000	3' x 5'	8 lbs.	346.00	283.75	245.60	235.20
259001	3' x 10'	16 lbs.	568.00	465.75	403.25	386.25
259002	4' x 6'	12 lbs.	442.25	362.50	314.00	300.75

USD MSRP (C)

Production Lead Time: 7 days from final proof approval

Light colors show dirt easily and are not recommended for background colors. Item has limited number of available colors (150). We cannot guarantee color matching. Test strip/match print/test grid not available.



4' x 6'



Mat features chemical-resistant plush carpet.

DECOR

BLANKETS



Add extra coziness to any room with these snuggly soft blankets.

- Artwork is dye sublimated on soft fleece fabric
- Single-sided
- Fleece unimprinted side is white
- Sherpa unimprinted side is ivory
- Machine wash on cold gentle cycle and tumble dry, no heat

Fleece Blanket

Item #	Description	Product Wt.	1	2-5	6-11	12-24
281117	50" x 60"	1.3 lbs.	50.85	49.32	47.80	46.27
281118	60" x 80"	2.1 lbs.	69.90	67.80	65.70	63.60

USD MSRP (C)

Sherpa Blanket

Item #	Description	Product Wt.	1	2-5	6-11	12-24
281111	50" x 60"	2 lbs.	63.60	61.65	59.15	57.20
281112	60" x 80"	3.2 lbs.	82.60	80.15	76.85	74.35

USD MSRP (C)

Production Lead Time: 3 days from final proof approval



Sherpa blanket is finished with a whipstitched edge.



Fleece blanket is finished with a hemmed edge.



18" X 18"

16" X 16"



Textured fabric gives style and depth to the pillow cover.



The reverse side of single-sided pillows is white.

INDOOR PILLOWS



Instantly revitalize and add comfort to any space with these custom pillows.

- Artwork is printed on durable textured polyester fabric
- Single- and double-sided options available
- Poly-fill pillow insert
- Zipper closure
- Pillow cover is machine-washable; wash on cold gentle cycle and tumble dry, no heat

Indoor Pillows

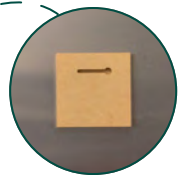
Item #	Description	Product Wt.	1	2-5	6-11	12-24
281200	16" x 16" Single-Sided Kit	1.2 lbs.	44.48	43.15	41.81	40.48
281201	16" x 16" Double-Sided Kit	1.2 lbs.	50.85	49.32	47.80	46.27
281202	18" x 18" Single-Sided Kit	1.4 lbs.	50.85	49.32	47.80	46.27
281203	18" x 18" Double-Sided Kit	1.4 lbs.	57.15	55.45	53.75	52.00

Kit Includes: Pillow Graphic Cover and Installed Poly-Fil Insert USD MSRP (C)

Production Lead Time: 2 days from final proof approval



16" X 16"



Hidden shadow mount hardware lets you hang your art on the wall like a picture frame.

Finished with rounded corners.

ALUMINUM PRINTS



Make your art shine with a sleek and modern aluminum print.

- Scratch-resistant for long-term use
- A white base coat makes colors pop
- Print is single-sided
- No assembly required

Aluminum Prints with Shadow Mount

Item #	Description	Product Wt.	1	2-5	6-11	12-24
264225	10" x 20"	0.95 lb.	45.12	43.77	42.41	41.06
264211	16" x 16"	0.9 lb.	61.65	59.80	57.95	56.10
264219	24" x 36"	4 lbs.	277.00	268.75	260.25	252.00

USD MSRP (C)

Production Lead Time: 2 days from final proof approval

JOURNEY MODULAR DISPLAY SYSTEM



Pack up your SEG and go with this conveniently foldable frame.

- Modular design allows you to expand and modify into various configurations
- Artwork is dye sublimated on recycled polyester knit
- 100% recycled media is made with fibers recycled from plastic bottles
- Includes two graphic panels for a double-sided display
- 1.625" frame depth
- Tool-free assembly

Journey Full Wall

Item #	Description	1	2-5	6-11	12-24
254860	3'W Kit	466.50	448.00	429.25	406.00
254869	6'W Kit	848.00	831.00	774.50	753.00
254872	8'W Kit	955.50	937.50	872.50	849.50
254875	10'W Kit	1500.00	1463.00	1372.00	1326.00

3'W Kit Includes: Hardware, 2 Graphic Panels and Soft Carry Case
 6'-10'W Kit Includes: Hardware, 2 Graphic Panels, 180° Connector Set and 2 Soft Carry Cases

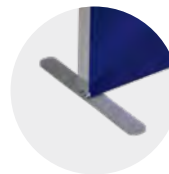
USD MSRP (C)

Description	Product Size	Product Wt.	Media
3'W	36.125"W x 90.625"H x 15.125"D	14 lbs.	recycled polyester knit
6'W	72"W x 90.625"H x 15.125"D	26.4 lbs.	recycled polyester knit
8'W	96"W x 90.625"H x 15.125"D	28.4 lbs.	recycled polyester knit
10'W	120"W x 90.625"H x 15.125"D	31.6 lbs.	recycled polyester knit

Production Lead Time: 4 days from final proof approval



Aluminum frame can be recycled after use.



Slim feet stabilize the display and have a sleek look.



The lightweight aluminum frame folds for portability.



Combine walls with other Journey components to craft a highly adaptable and visually striking display (sold separately).

DELUXE GEOMETRIX DISPLAY



A strong, durable frame supports multiple graphic panels and shelves so you have countless options for setting up a creative display.

- Setup and teardown can be done in seconds
- Artwork is dye sublimated on polyester double knit
- Aluminum frame with nylon plastic hubs

Deluxe GeoMetrix Displays

Item #	Description	1	2-5	6-11	12-24
342006	9-Quad Classic Kit	1727.00	1689.00	1651.00	1612.00
342000	12-Quad Classic Kit	2040.00	2002.00	1964.00	1926.00

Kit Includes: Frame, Graphic Panels, 2 Internal Shelves and Soft Carry Case
 Shelves do not fit in provided soft carry case.
 See website for shelf soft carry case.

USD MSRP (C)

Description	Product Size	Product Wt.	Media
9-quad classic	90"W x 89.5"H x 13"D	24 lbs.	polyester double knit
12-quad classic	118"W x 89.5"H x 13"D	30.5 lbs.	polyester double knit

Production Lead Time: 4 days from final proof approval



12-Quad Classic

FLOOR DISPLAYS



Compatible displays can be hinged together using the included EuroFit Connector, item #255122. US Patent #9637963

when choosing a floor display have you considered...

- What is the size of your space?
- How will this display be transported?
- Will you be changing out your look and message?



EUROFIT WALLS



The ever-popular EuroFit line offers many elegant and versatile display solutions.

- Artwork is vibrantly dye sublimated on recycled polyester knit
- Hinge together separate EuroFit displays with the EuroFit Connector
- Create modular layouts with limitless possibilities

72"H EuroFit Straight Wall (Recycled Polyester Knit)

Item #	Description	1	2-5	6-11	12-24
256203	2'W Kit	264.50	256.75	248.70	240.80
256212	3'W Kit	349.50	335.50	321.75	302.25

Kit Includes: Hardware, Graphic Cover, EuroFit Connector and Soft Carry Case USD MSRP (C)

Description	Product Size	Product Wt.	Media
2'W	24.5"W x 72"H x 19"D	7.5 lbs.	recycled polyester knit
3'W	36.5"W x 72"H x 19"D	8.25 lbs.	recycled polyester knit

90"H EuroFit Straight Wall (Recycled Polyester Knit)

Item #	Description	1	2-5	6-11	12-24
256215	3'W Kit	422.25	409.50	396.75	384.25
256233	5'W Kit	636.50	617.00	598.00	579.00
255180	8'W Kit	966.50	937.50	908.50	879.50
256251	10'W Kit	1300.00	1274.00	1235.00	1209.00
256427	20'W Kit	2525.00	2495.00	2398.00	2368.00

Kit Includes: Hardware, Graphic Cover, EuroFit Connector and Soft Carry Case USD MSRP (C)
20' Display Includes: Hardware, Graphic Cover, 2 EuroFit Connectors and 2 Soft Carry Cases

Description	Product Size	Product Wt.	Media
3'W	36.5"W x 91.25"H x 19"D	10.3 lbs.	recycled polyester knit
5'W	60.5"W x 91.25"H x 19"D	12.6 lbs.	recycled polyester knit
8'W	96.5"W x 91.25"H x 19"D	18 lbs.	recycled polyester knit
10'W	115.5"W x 91.25"H x 19"D	21.25 lbs.	recycled polyester knit
20'W	231"W x 91.25"H x 19"D	42.75 lbs.	recycled polyester knit

Production Lead Time: 4 days from final proof approval



Get a green screen compatible backdrop printed as PMS 354C; available online.



Biodegradable media kits in select sizes are available online.

SPLASH DISPLAY



This pop-up display transforms from a compact unit to an impressive backdrop in minutes.

- Graphic panels are available in recycled polyester knit and block-out fabric
- Recycled polyester knit is a 100% recycled media made with fibers recycled from plastic bottles
- Hook-and-loop fasteners make graphic panel installation simple
- Aluminum frame with nylon plastic hubs
- US Patent #9214104

8' Straight Splash

Item #	Description	1	2-5	6-11	12-24
341004	Recycled Polyester Knit Face Kit	1162.00	1139.00	1116.00	1094.00
342208	Block-Out Fabric Face Kit	1257.00	1233.00	1209.00	1184.00
341005	Recycled Polyester Knit Wrap Kit	1394.00	1371.00	1349.00	1326.00
342209	Block-Out Fabric Wrap Kit	1495.00	1471.00	1446.00	1422.00

Kit Includes: Frame, Graphic Panel and Soft Carry Case USD MSRP (C)

Product Size **Product Wt.**
 90"W x 89.5"H x 12.25"D 19.25 - 24.25 lbs.

10' Straight Splash

Item #	Description	1	2-5	6-11	12-24
341008	Recycled Polyester Knit Face Kit	1394.00	1371.00	1349.00	1326.00
342212	Block-Out Fabric Face Kit	1495.00	1471.00	1446.00	1422.00
341009	Recycled Polyester Knit Wrap Kit	1626.00	1603.00	1581.00	1558.00
342213	Block-Out Fabric Wrap Kit	1717.00	1693.00	1669.00	1645.00

Kit Includes: Frame, Graphic Panel and Soft Carry Case USD MSRP (C)

Product Size **Product Wt.**
 119"W x 89.5"H x 12.25"D 23.75 - 31 lbs.

Production Lead Time: 4 days from final proof approval



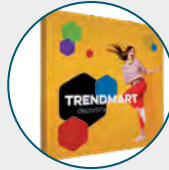
8' with wrap graphic panel

10' with face graphic panel

Kit Options



Face Graphic Kit
 Graphic panel covers the front of the frame.

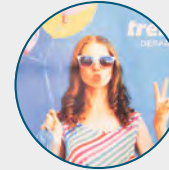


Wrap Graphic Kit
 Graphic panel covers the front and two sides of the frame. Back of the frame is not covered.

Media Options



Block-Out Fabric
 Block-out fabric is designed to prevent light from showing through the display. It is a good option for brightly lit areas.



Recycled Polyester Knit
 Sustainable recycled polyester knit is made with fibers recycled from plastic bottles.

BRAVO EXPANDING DISPLAY



The Bravo is the most durable and dependable expanding display available.

- Frame poles are adjustable to accommodate a variety of banner sizes (see website for details)
- Reinforced joints keep the banner taut over an extended period of time
- Single-sided graphics are dye sublimated on recycled polyester knit
- 100% recycled media is made with fibers recycled from plastic bottles
- Small feet for a discreet footprint
- Custom banner sizes available (call for quote; restrictions may apply)

Bravo Expanding Display

Item #	Description	1	2-5	6-11	12-24
254150	8' Kit	788.00	759.00	730.50	702.00
254151	10' Kit	954.50	925.00	896.00	866.50

Kit Includes: Hardware, Graphic and Soft Carry Case USD MSRP (C)

Description **Product Size** **Finished Graphic Size** **Product Wt.**
 8' 94"W x 94.25"H x 14"D 89"W x 93"H 20.2 lbs.
 10' 118"W x 94.25"H x 14"D 113"W x 93"H 22 lbs.

Production Lead Time: 4 days from final proof approval



The vertical clamping system lets you adjust height.



Durable rounded corners.